

Roll.No.

25UGFC1PA1

SHRIMATHI DEVKUNVAR NANALAL BHATT VAISHNAV COLLEGE FOR WOMEN
(AUTONOMOUS)

(Affiliated to the University of Madras and Re-accredited with 'A+' Grade by NAAC)
Chromepet, Chennai - 600 044.

B.Com.PA - END SEMESTER EXAMINATIONS - NOVEMBER 2025
SEMESTER - I

25UGFC1PA1- GENERAL ENGLISH – I

Total Duration : 2 Hrs.30 Mins.

Total Marks : 60

Section B

Answer any **SIX** questions (6 × 5 = 30 Marks)

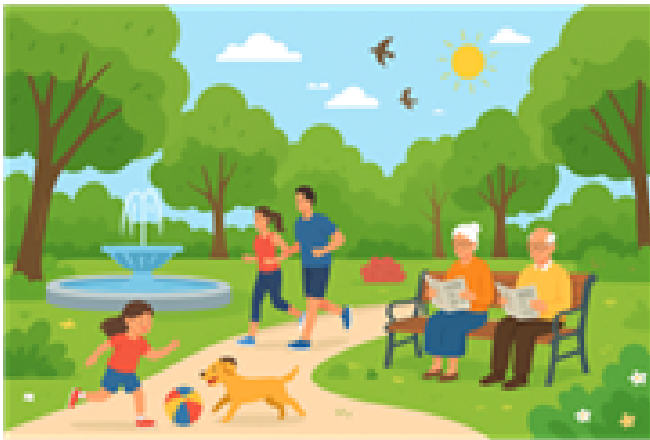
1. Find sentence pattern.
 - a. She listed all the books on the shelf.
 - b. The teacher asked, "Who is absent today".
 - c. He sketched a beautiful landscape yesterday.
 - d. They explained the problem clearly.
 - e. We named the puppy Max.
2. Explain how spoken English differs from written English in a classroom discussion.
3. Apply Behrman's actions to explain how selfless acts can influence others' lives in real-life situations.
4. Show, with examples from the poem, how Angelou uses imagery to express defiance.
5.
 - a. Choose the correct pronoun to complete the sentence: ___is my best friend, Sam or John?
 - b. Find the pronoun in this sentence: She went to the market.
 - c. Indicate which word in the sentence is a reflexive pronoun: He did the homework himself.
 - d. Name the pronoun in the sentence: Those are beautiful flowers.
 - e. What pronoun would you use to replace the noun "the dog"?
6. Relate the behavior of the wedding guests to human tendencies to show off or compete socially in real life.
7. Explain how social media can positively and negatively affect youth.
8. Distinguish between essential and non-essential information when writing a Bio-Note.

Contd....

Section C

Answer any **THREE** questions ($3 \times 10 = 30$ Marks)

9. Prepare five original sentences using both auxiliary verbs and determiners correctly.
10. Relate Ramanujan's concept of balance in nature to a real-life example of an ecosystem (like a forest, river, or pond).
11. Distinguish between literal and figurative language used in describing the river and its stairs.
12. Distinguish between the activities of children, adults, and elderly people and explain their impact on the park's atmosphere.



13. Appraise the effectiveness of the tone and structure in the following professional email. How could it be improved to achieve clarity and impact?
